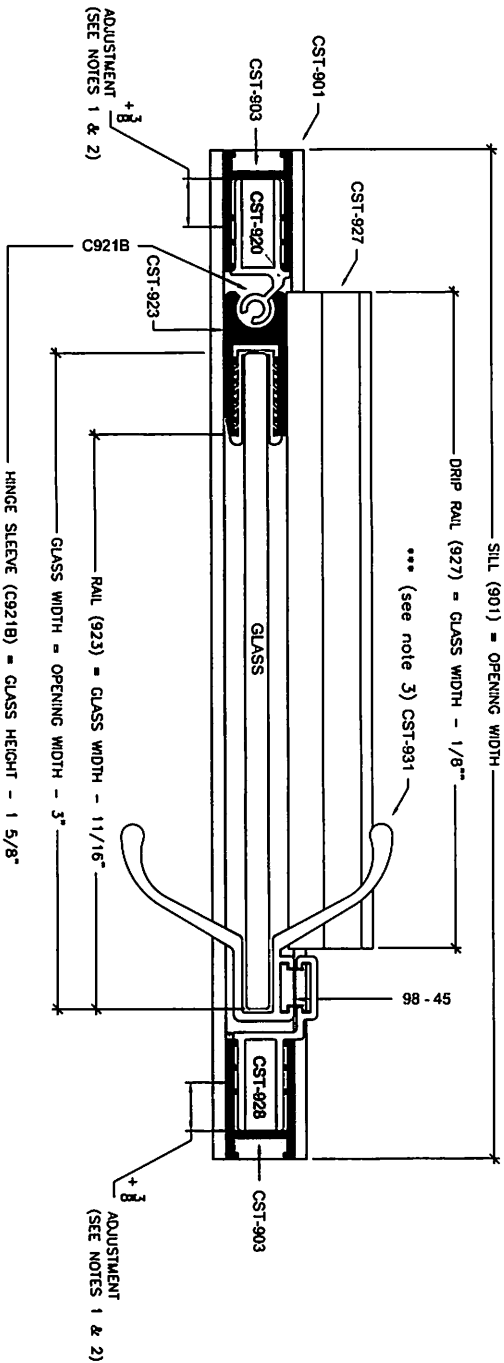


Vertical cross section



horizontal cross section

- NOTES:**
1. FORMULAS ARE BASED ON A MINIMUM WIDTH OPENING. WHEN MEASURING OPENING WIDTHS, ALWAYS CHECK FOR OUT OF PLUMB WALL CONDITIONS.
 2. STANDARD DOOR WIDTH ADJUSTMENT IS (+) 3/4 OF AN INCH. THE 3/4 INCH IS GAINED BY ADJUSTING STRIKE AND HINGE METALS (926 & 920) WITHIN THEIR RESPECTIVE WALL JAMBS (903) AS SHOWN IN HORIZONTAL CROSS VIEW.
 3. WHEN USING C-PULL HANDLES (76-BGL) IN LIEU OF CST-931 HANDLES, PLEASE REFER TO GLASS PANEL PROCESSING SHEET FOR HOLE SIZE AND LOCATIONS.

Series

PARAGON

Unit Configuration

Frameless Door



Coastal Industries Inc.