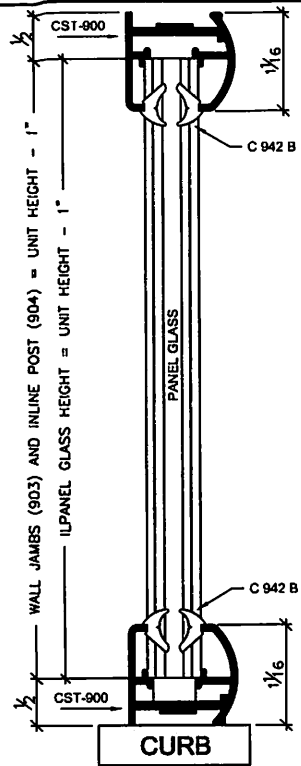


Door  
vertical cross section

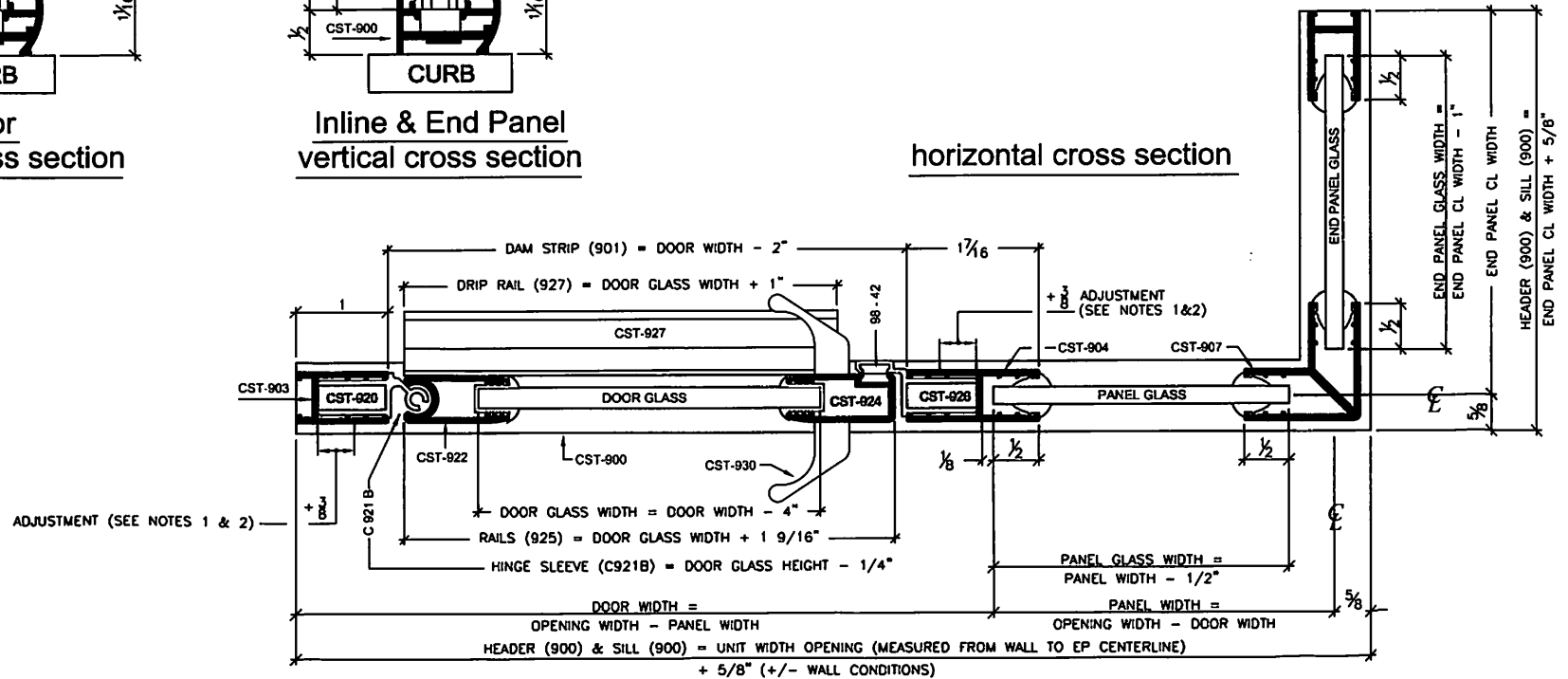


Inline & End Panel  
vertical cross section

**NOTES:**

1. FORMULAS ARE BASED ON A MINIMUM WIDTH OPENING. WHEN MEASURING OPENING WIDTHS, ALWAYS CHECK FOR OUT OF PLUMB WALL CONDITIONS.
2. STANDARD DOOR WIDTH ADJUSTMENT IS (+) 3/4 OF AN INCH. THE 3/4 INCH IS GAINED BY ADJUSTING STRIKE AND HINGE METALS (926 & 920) WITHIN THEIR RESPECTIVE JAMBS (903 & 904) AS SHOWN IN HORIZONTAL CROSS VIEW.

horizontal cross section



Series                      Unit Configuration

PARAGON

Door w/ 1 Inline & 1 End Panel



**Coastal Industries Inc.**